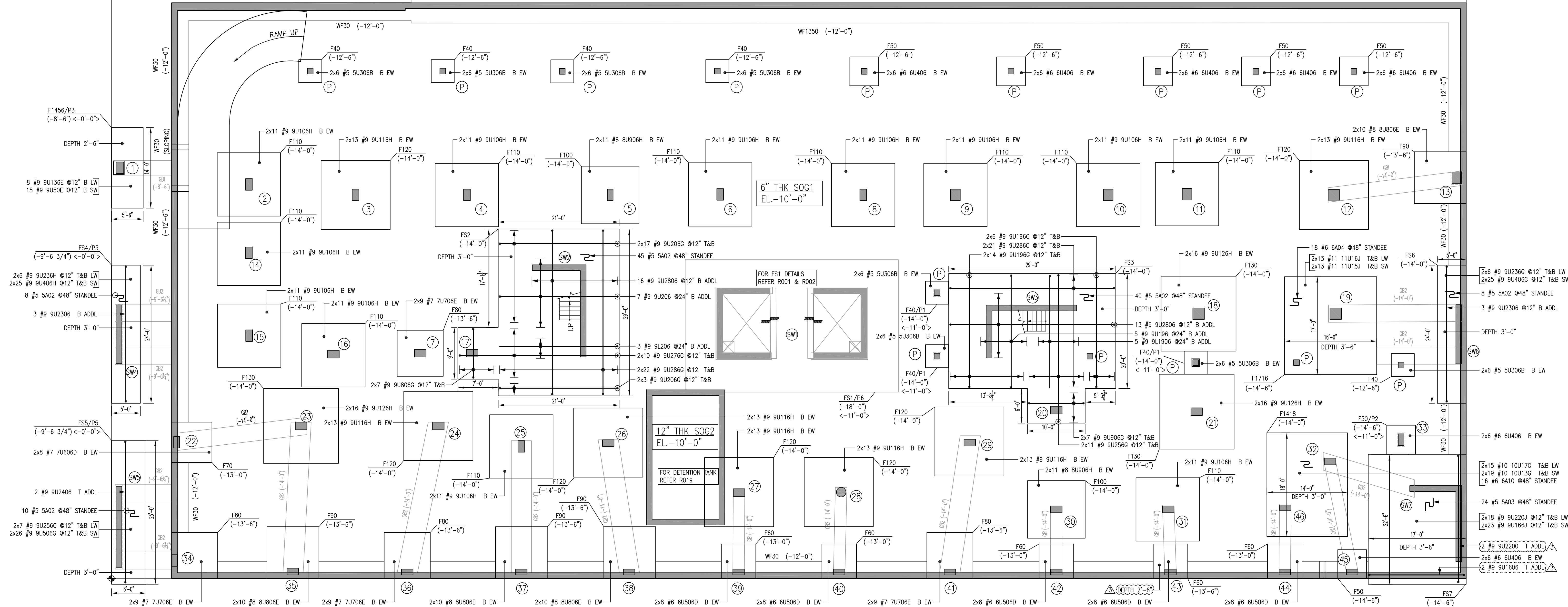
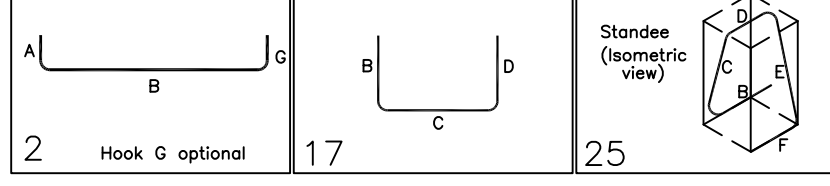


PROPERTY LINE



Bar Mark Qty Size Spacing Length Type X Y Z

Bar Mark	Qty	Size	Spacing	Length	Type	X	Y	Z
9U2406	2	#6	27'-8"	2	1'-7"	24'-6"		
9U2306	6	#6	26'-9"	1	1'-7"	23'-6"		
9U136E	8	#9	17'-4"	17	1'-11"	13'-5"	1'-11"	
9U136S	15	#9	8'-10"	17	1'-11"	5'-0"	1'-11"	
9U236H	13	#6	28'-4"	17	2'-5"	23'-5"	2'-5"	
9U406H	50	#6	9'-4"	17	2'-5"	4'-5"	2'-5"	
9U506G	52	#6	10'-2"	17	2'-4"	5'-6"	2'-4"	
7U606D	16	#7	9'-4"	17	1'-5"	6'-6"	1'-5"	
5U306B	90	#5	5'-4"	17	0'-11"	3'-6"	0'-11"	
9U106H	260	#6	13'-4"	17	2'-5"	10'-5"	2'-5"	
7U706E	72	#7	11'-4"	17	1'-11"	7'-4"	1'-11"	
9U116H	182	#6	16'-4"	17	2'-5"	11'-5"	2'-5"	
8U806E	80	#8	12'-4"	17	1'-11"	8'-6"	1'-11"	
9U126H	36	#9	17'-4"	17	2'-5"	12'-6"	2'-5"	
9U256G	30	#9	30'-2"	17	2'-4"	26'-5"	2'-4"	
5A02	111	#5	6'-4"	25	1'-4"	2'-3 3/4"	6'-10"	2'-3 3/4"
6U406	84	#6	6'-5"	2	1'-0"	4'-4"	1'-0"	1'-1 1/4"
9U206	7	#9	23'-8"	2	1'-7"	20'-6"		
8U206	3	#8	22'-1"	2	1'-7"	20'-6"		
9U2806	28	#9	31'-8"	2	1'-7"	28'-6"		
9U1906	3	#9	21'-1"	2	1'-7"	19'-5"		
9U196	15	#9	22'-8"	2	1'-7"	19'-4"		
8U906H	44	#8	14'-4"	17	2'-5"	9'-4"	2'-5"	
9U206G	40	#9	25'-2"	17	2'-4"	20'-5"	2'-4"	
9U278G	20	#9	32'-7"	17	2'-4"	27'-5"	2'-4"	
9U806G	14	#9	13'-2"	17	2'-4"	8'-6"	2'-4"	
9U289G	88	#9	33'-7"	17	2'-4"	28'-6"	2'-4"	
9U906G	14	#9	14'-2"	17	2'-4"	9'-4"	2'-4"	
9U196G	40	#9	24'-2"	17	2'-4"	19'-4"	2'-4"	
11U16J	28	#11	22'-0"	17	2'-9"	16'-4"	2'-9"	
11U15J	28	#11	21'-0"	17	2'-9"	15'-5"	2'-9"	
9U236G	12	#9	28'-2"	17	2'-4"	23'-6"	2'-4"	
9U406G	50	#6	9'-2"	17	2'-4"	4'-6"	2'-4"	
9U220J	30	#9	22'-8"	17	2'-4"	22'-8"	2'-4"	
9U166J	46	#9	22'-0"	17	2'-4"	16'-4"	2'-4"	
6U506D	80	#6	8'-4"	17	1'-5"	5'-4"	1'-5"	
10U17G	30	#10	22'-2"	17	2'-4"	17'-5"	2'-4"	
10U13G	30	#10	18'-2"	17	2'-4"	13'-6"	2'-4"	
6A10	16	#6	8'-3 3/4"	25	1'-6"	2'-2 3/4"	1'-6"	1'-1 1/4"
6A04	24	#6	9'-4 1/2"	25	1'-6"	2'-8 1/4"	1'-6"	2'-8 1/4"
6A04	18	#6	9'-4 1/2"	25	1'-6"	2'-8 1/4"	1'-6"	2'-8 1/4"
9U1606	2	#9	19'-8"	2	1'-7"	16'-4"	1'-7"	1'-3 3/4"
9U2200	2	#9	25'-2"	2	1'-7"	22'-0"	1'-7"	



SPREAD FOOTING REINFORCEMENT DETAILS
 REF DWG-F100.00.F0-200.00 (03/16/21)



LEGEND

- T - TOP
- B - BOTTOM
- H - HORIZONTAL
- V - VERTICAL
- CLR - CLEAR
- TYP - TYPICAL
- REF - REFER
- DWG - DRAWING
- DWLS - DOWELS
- EL - ELEVATION
- EF - EACH FACE
- SF - SIDE FACE
- COR - CORNER
- THK - THICK
- LW - LONGWAY
- SW - SHORTWAY
- NS - NORTH/SOUTH
- EW - EAST/WEST

TENSION LAP SPLICE LENGTH CLASS B - CATEGORY I
 SHEAR WALLS - 6000 PSI
 COLUMNS - 6000 PSI

SIZE	GR.	TOP	OTHER
#4	60	2'-2"	1'-8"
#5	60	2'-9"	2'-1"
#6	60	3'-3"	2'-6"
#7	60	4'-9"	3'-8"
#8	60	5'-2"	4'-2"
#9	60	6'-2"	4'-9"
#10	60	6'-11"	5'-4"
#11	60	7'-8"	5'-11"

LTS

TENSION LAP SPLICE LENGTH CLASS B - CATEGORY I
 FOUNDATION - 5000 PSI
 FDN WALLS - 5000 PSI

SIZE	GR.	TOP	OTHER
#4	60	2'-5"	1'-10"
#5	60	3'-0"	2'-4"
#6	60	3'-7"	2'-9"
#7	60	5'-3"	4'-0"
#8	60	6'-0"	4'-7"
#9	60	6'-9"	5'-2"
#10	60	7'-7"	5'-10"
#11	60	8'-5"	6'-6"

LTS

NOTES
 FOR FOOTING FS1 AND ELEVATOR PITS DETAILS REFER DWG.NO : R001 & R002
 FOR SPREAD FOOTINGS PLAN AND REINFORCEMENT DETAILS REFER DWG.NO : R003
 FOR WALL, SLAB & COLUMN DOWELS FROM SPREAD FOOTINGS REFER DWG.NO : R004
 FOR SPREAD FOOTINGS BAR ARRANGEMENT, SECTION AND TYPICAL DETAILS REFER DWG.NO : R005
 FOR CONTINUOUS FOOTINGS AND DOWELS REFER DWG.NO : R006
 FOR CONTINUOUS FOOTINGS SECTION DETAILS REFER DWG.NO : R007